



SCAN QR CODE  
TO KNOW MORE

## SINTEX-BAPL LIMITED

**Toll Free No.: 1800-121-2764**

[www.sintexonline.com](http://www.sintexonline.com)

Email: [sintex\\_support@welspun.com](mailto:sintex_support@welspun.com)

 [sintex\\_bapl\\_limited](#)  [sintexBAPLLimited](#)  [Sintex BAPL Limited](#)

# Sintex

SAAF. SAFE. SAHI.

**Water management  
solutions**  
for communities  
and projects

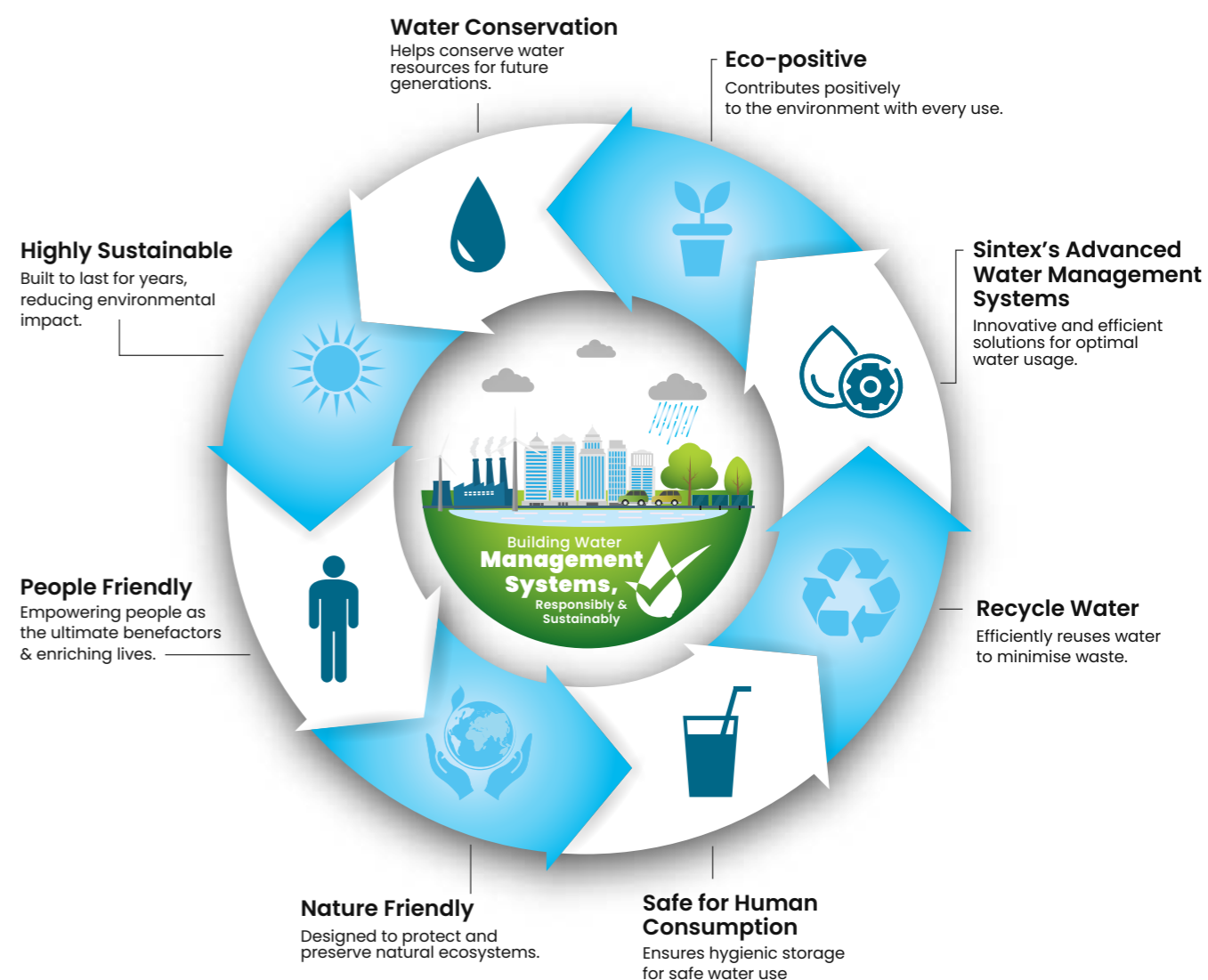


## Index

<b>About Us</b>	<b>Page 3</b>
<b>Water Management System (WMS) Safe, Sustainable &amp; Reliable</b>	<b>Page 4 &amp; 5</b>
<b>SMC Panel Tanks</b>	<b>Page 6-11</b>
<b>FRP PSTP</b>	<b>Page 12-15</b>
<b>Advanced Septic Tank</b>	<b>Page 16-19</b>
<b>FRP Underground Water Storage Tank</b>	<b>Page 20 &amp; 21</b>
<b>Powered by the Welspun legacy</b>	<b>Page 22 &amp; 23</b>

## About Us

Sintex's advanced water management systems embody our long-term commitment to ensuring safe, sustainable and eco-friendly solutions. We empower communities to recycle, conserve and responsibly use water, securing a healthier future for both, people and the planet.



## Sintex Water Management Solutions

At Sintex, our legacy is one of delivering effective water management solutions.

We have been pioneering the water management industry, offering you a diverse array of strong and dependable water management solutions.

From SMC Panel Tanks to FRP Sewage Treatment Plants to Septic Tanks, our commitment to strength, durability, safety and reliability ensures you'll find effective and efficient water management solutions tailored to your industry needs in the Sintex range of water management solutions.

## Water Management Solutions – Safe, Sustainable & Reliable



### SMC Panel Tanks

- Long lasting Durability of more than 50 years
- Accommodates upto 16 Lakh Litres of water storage
- Reliable & Dependable
- Glass Reinforced Polymer using Sheet Molded Composites made of high quality fiber glass & resins
- Easy & quick installation with less maintenance
- This product meets the acceptance criteria for ISI 14399: 1996 (Part 1&2) standards
- Manufacturing & supplying since 1990



### FRP Packaged Sewage Treatment Plants

- Making domestic wastewater reusable
- This plant recycles, reuses & conserves water (and money)
- The capacity ranges from 10 KLD – 650 KLD
- The FRP tank is manufactured by chopped whoop winding process
- Easy to install & maintain



### Fibreglass Reinforced Plastic (FRP) Underground Water Storage Tanks

- Robust structure
- Integrally cast rib construction and dished-end design for added strength
- Non-porous material prevents the contamination of stored water
- Custom manufactured to meet clients' specific requirements
- Can be re-installed after recertification



### Advanced Septic Tanks

- Rust and leak proof
- Excellent performance through massive reduction of BOD
- Easy to install and maintain

**SINTEX PURE  
COMMUNITY PANEL TANK**

**SMART SOLUTIONS  
LARGE STORAGE**

It is **SAFER, SMARTER & SUSTAINABLE** as compared to rcc tanks. easier to install, easier to maintain, easier to move.



Reclaim your terrace space with sintex pure Community tank

**Simplify With Sintex**

Replace multiple individual water tanks with one 25,000L+ Sintex pure community panel tank and save precious space.



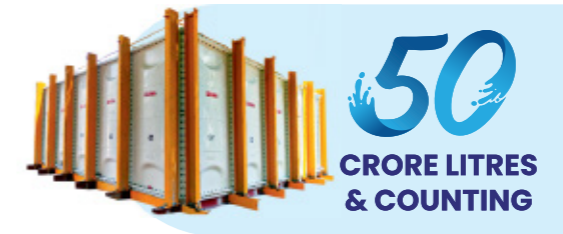
The Conventional Way



**Sintex** Way



Scan to play the video of community tanks



Re-imagining community water storage solutions. A fantastic solution for community water storage needs.

**Product Features & Benefits**



Lightweight



Rust-Free



Customisable



Virgin Plastic



100% Food Grade plastic



No Algae Formation



FDA Approved



Saves Installation Time



Chemical Resistant



Electrical Resistance



Fire Retardant and Tailor made



Portable



No Metal part in contact with water





## CUSTOMIZED LARGE WATER STORAGE SOLUTIONS FOR VARIOUS INSTITUTIONS

Railway Stations | Hospitals | Hotels | Educational Institutions | Commercial Complexes  
 Defence Areas | Malls | PWD | CPWD | MES | Data Centres | IT Parks | Other Public Utilities

Preferred installation under various Jal Jeevan Mission

### Why Sintex Pure Community Panel Tanks are superior to RCC Tanks?

- Easy to install, move, and clean
- Hygienic Water Storage: Offers safer, cleaner water compared to concrete tanks, with protection from algae growth and leaching
- Designed to last up to 50 years with leak proof operations
- Comprehensive Solution by Sintex:
  - Rooftop inspection to assess site details
  - Customized design based on capacity, space, and cost requirements
  - Professional installation as per the tailored design

**It is SAFER, SMARTER & SUSTAINABLE** as compared to RCC tanks. Easier to install, easier to maintain, easier to move.



The Conventional Way



**Sintex** Way (SMC PT)

### Easy steps to get Community Panel Tank for your premises

- Express interest about Community Panel Tank with your nearest retailer or reach out to us using the QR code
- Provide your storage tank requirements
- Fix site inspection with Sintex team by paying a token advance payment to Sintex BAPL
- Post site inspection, get a detailed storage tank recommendation customised for your premises.
- Final payment & tank installation



Site visit payment is collected in advance, billed separately by the Service team, and accepted via bank transfer to Sintex BAPL. This amount will be adjusted against the final payment.

### Prestigious Installations



Udyog Bhavan

**48,000 litres SMC Panel Tank - Moxy Hotel, Bengaluru**



Rashtrapati Bhavan

**84,000 litre of tank installed in Leela Business Park, Mumbai**



**12,00,000 Litres SMC Panel Tank - Welspun city, Anjar**



**7,56,000 Litres SMC Panel Tank - Railway station, Ludhiana**


## Why SMC Panel Tanks are a safer, smarter & more sustainable replacement for Zincalume Steel Tanks.

Sr. No.	Parameters	Zincalume Steel Tanks	SMC /GRP Panel Tanks
1	Material of Component	Steel Sheet Coated with Zinc & Aluminium+ Polyethylene Lining/Balloon	Thermosetting Polyester Resin (Fibreglass +Resin)
2	Thickness Range	1.5mm to 3.5mm metal sheet	As per BIS, 3mm to 10mm trunk shape panels, designed to withstand Hydrostatic pressure & wind pressure
3	Tank Shape	Circular	Square/Rectangular
4	Water/Liquid Storage	Needs plastic lining or balloon for water storage	Direct Water Storage
5	What if the plastic lining is punctured?	i) Worsens water quality and leads to bad smell & taste ii) Tank will corrode & may burst iii) Cannot clean the tank as liner puncture is very common	No liner required.
6	Effect of Water On Tank	The steel sheet corrodes when it comes into contact with water and risks the tank bursting	Non corrosive. Water has no effect on the tank's surface and structural strength
7	Taste and smell of water	Unpleasant & Unhygienic	Maintains the purity of water Neutral taste and smell with utmost hygiene
8	Cleaning of Tank	Cleaning the tank is always a high risk as the plastic liner may puncture and cause corrosion and bursting of tank	Easy & Quick
9	Compatibility with Other Metals	Prone to rust when it comes in contact with incompatible materials e.g. Copper, Iron etc	Neutral to any material
10	Insulation	Bad	Good
11	Electrical Resistant	Highly conductive	Non-conductive
12	Hygiene	Condensation may activate bacterial growth and increase the chance of rusting	Smooth Surface, no accumulation of dust, corrosion resistant
13	Risk of Use At/Near Sea Shore	Prone to rust.	No effect
14	Associated Risk	Prone to rust when it comes in contact with incompatible materials e.g. Copper, Iron etc	No effect
		Can't be kept on a fresh RCC Structure as fresh concrete releases Ammonia which reacts with Zincalume steel leads to corrosion	No effect
		Must be cleaned regularly from outside as any debris (metals, wood, fertilizers, mining activities) can lead to corrosion	No cleaning required from outside U.V. stabilized tank No fading of colors No crack formation No corrosion
15	Stability	Lighter & unstable when empty and may fall or be displaced	Heavier & more stable without the risk of falling or displacement when empty
16	Effect of Wind Pressure	May displace or topple down if empty or partially filled	No effect due to weight and excellent fitting & fixtures
17	Portability	Transportation is not advised due to a risk of depletion of the Zinc & Aluminium coating as well as the deformation of the metal sheet	Design to be easily dismantable and relocated reinstalled in a new location

## Why SMC Panel Tanks are a safer, smarter & more sustainable replacements for RCC Tanks.

Sr. No.	Features	RCC Tank	SMC /GRP Panel Tanks
1	Material	Cement & concrete and reinforced with steel	Thermoset polyester resin (Fibreglass and Resin)
2	Time to manufacture	Few Months	3-4 days for 100KLD
3	Cost-effectiveness	Expensive	Very Cost Effective
4	Durability	10-15 Years <i>Subject to maintenance &amp; water condition</i>	Over 50 Years
5	Weight to strength ratio	Very heavy	Lightweight with same strength
6	Portability	Not Possible	Quick & Easy
7	Modularity	Cannot change	Easy to assemble, dismantle & reinstall
8	Repair & Maintenance	Periodically Required	Not Required
9	Construction	Need Workmanship	Does not need workmanship
10	Water Contamination	Unhealthy due to leaching	Remains Hygienic
11	Algae Formation	Very Often	No Algae Formation

### Application areas:



- Clean Water Storage**
- DM-water & Process-water Industries & Utility Organisations**
- Rural, Semiurban & Urban Water Supply Schemes**
- Housing Colonies**
- Firefighting Operations**
- Water Storage In Extreme Temperatures & Terrains**
- Multistoried Buildings**
- Construction Industry**
- Community Water Supply/ Public Water Storage**
- Multistory Residential & Commercial buildings**
- Industrial segments (Steel, FMCG, Dairy, Pharma etc.).**
- Institutions-Hotels, Hospitals, Educational Institutions Colleges / Universities - IIM, IIT etc.**
- Defence Establishments -MES, Ordnance factory etc.**
- Railways & Metro stations, Colonies & Locomotives.**
- Storage of Treated Water Distilled Mineral Water & Processed Water.**
- Water storage in coastal, hilly, extremely hot & cold difficult terrains- as SMC Panel Tanks are easily transportable.**



**SINTEX PACKAGED  
 SEWAGE TREATMENT  
 PLANTS**

**RECLAIM WATER,  
 RETHINK WATER  
 MANAGEMENT**

Built with durable FRP materials, our sewage treatment plants convert grey water into safe, reusable water for irrigation and cleaning, promoting efficient waste management



**HOW DO SINTEX FRP PACKAGED SEWAGE  
 TREATMENT PLANTS PLAY A CRUCIAL ROLE  
 IN WASTE WATER MANAGEMENT?**

- FRP Tanks are manufactured by cutting-edge chop whoop winding process
- Treats wastewater close to the source
- Negligible maintenance cost
- Ideal for decentralised applications
- Ensures cleaner water with no leakage or soil pollution
- Recycles between 10 to 650 KLD
- Virgin Plastic: For better strength, durability & flexibility

**Application areas:**

 Underground/ Onground installation	 Public Gardens & National Parks	 Restaurants	 Townships	 Railway Stations	 Hospitals
 Hotels & Resorts	 Educational Institutions	 Commercial Complexes	 Defence Areas	 Malls	 PWD
 CPWD	 MES	 Data Centres	 IT Parks	 Other Public Utilities	

**FRP PACKAGED  
 SEWAGE TREATMENT  
 PLANTS**



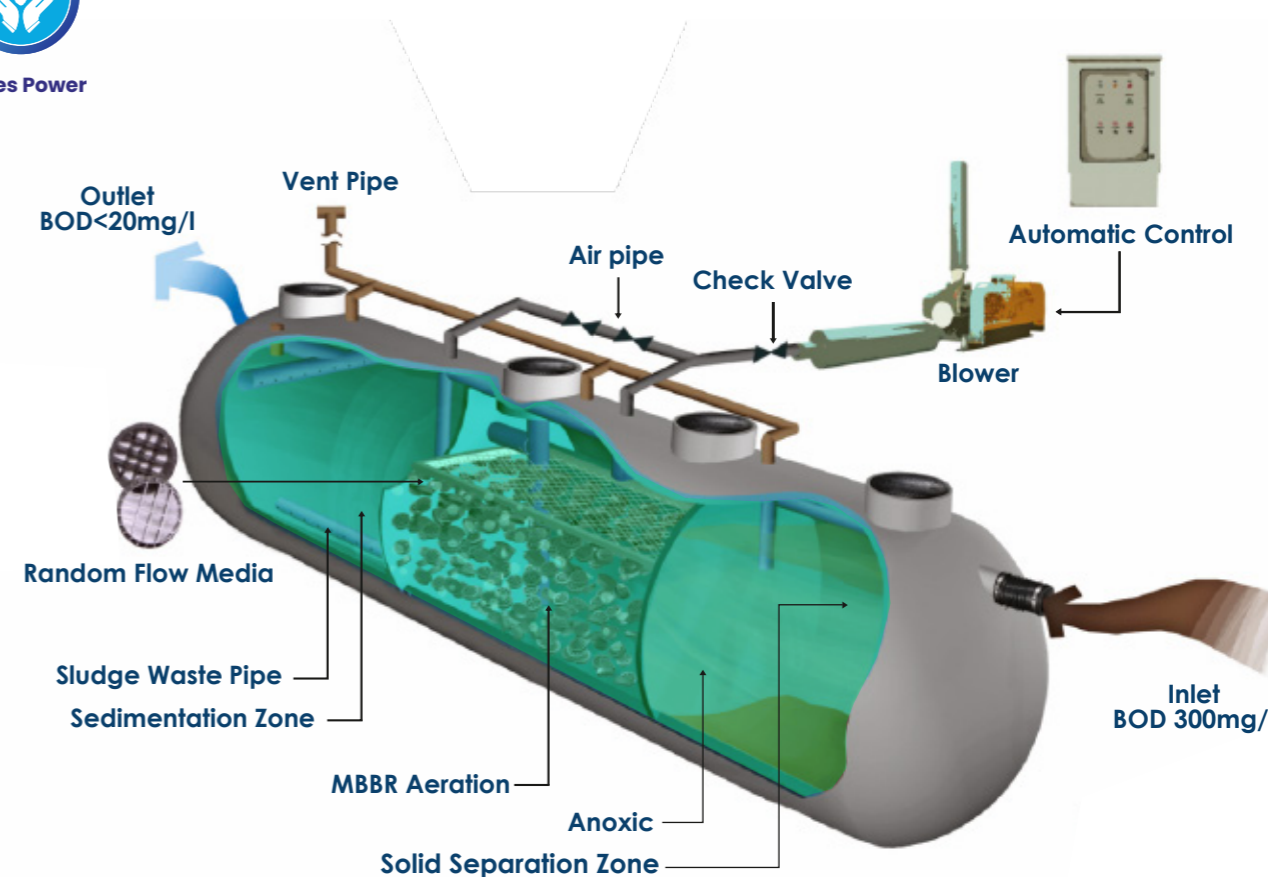
**How It Works**

Works efficiently through solid separation - Anoxic - MBBR aeration - Sedimentation - Tertiary treatment plant including disinfection - Treated water for reuse

**Product Features & Benefit**



Saves Power



**Easy steps to get Sewage Treatment for your premises**

- Express interest about Sewage treatment plant with your nearest retailer or reach out to us using the QR code
- Provide your storage tank requirements
- Fix site inspection with Sintex team by paying a token advance payment to Sintex BAPL
- Post site inspection, get a detailed storage tank recommendation customised for your premises.
- Final payment & tank installation



Site visit payment is collected in advance, billed separately by the Service team, and accepted via bank transfer to Sintex BAPL. This amount will be adjusted against the final payment.



**SINTEX ADVANCED  
 SEPTIC TANKS**

**WASTE  
 MANAGEMENT,  
 MADE EASY &  
 EFFICIENT**

Manufactured with advanced technology fo effective domestic wastewater treatment system



**ALSO AVAILABLE IN  
 PWTS & AST SERIES**

**WHAT'S ADVANCED ABOUT  
 SINTEX ADVANCED SEPTIC TANKS?**

- Manufactured with advanced technology for effective domestic wastewater treatment systems.
- Normal Septic Tanks reduce BOD by only 40%
- Sintex's cutting-edge technology reduces BOD by 70%
- Ranges from 800 Litre - 6000 Litre capacity

**Product Features & Benefits**



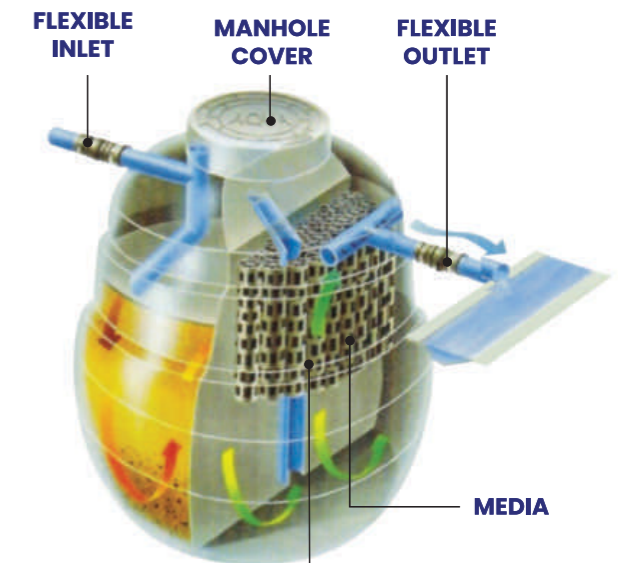
**Rust/Corrosion  
 Proof & Leak Proof**



**No electricity  
 used**



**Easy  
 Transportation &  
 Installation**



**FLEXIBLE-IN & OUTLET**

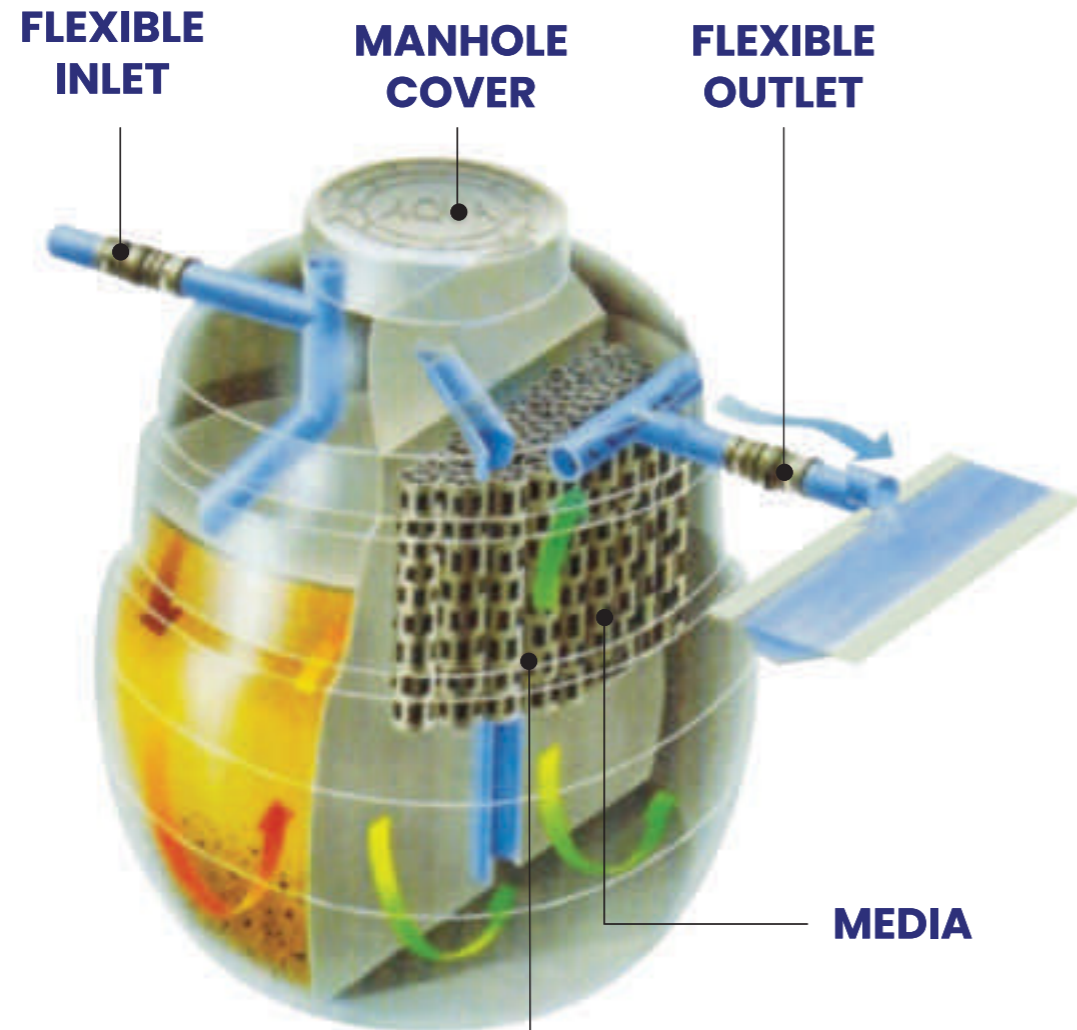


**PALL RING MEDIA**



**WASTE  
 MANAGEMENT  
 SOLUTION**

**ADVANCED SEPTIC TANKS**



**FLEXIBLE-IN & OUTLET**



**PALL RING MEDIA**

**How It Works**

**Step 1**  
 Domestic wastewater enters the tank.

**Step 2**  
 Gravity and time naturally divide it into three layers: scum, sludge, and effluent.

**Step 3**  
 The tank isolates solid waste and allows liquid waste to flow out for final treatment and disposal.

**Application areas:**



**Construction**



**Agriculture**



**Hospitality**



**Healthcare**



**Manufacturing**



**Retail and Service**



**Residential & Commercial Complexes**



**Restaurants & More**

**Easy steps to get Septic tank for your premises**

- Express interest about Septic Tank with your nearest retailer or reach out to us using the QR code
- Provide your storage tank requirements
- Fix site inspection with Sintex team by paying a token advance payment to Sintex BAPL
- Post site inspection, get a detailed storage tank recommendation customised for your premises.
- Final payment & tank installation



Site visit payment is collected in advance, billed separately by the Service team, and accepted via bank transfer to Sintex BAPL. This amount will be adjusted against the final payment.



**SINTEX UNDERGROUND  
 WATER TANKS (FRP)**

**DURABLE, HYGIENIC  
 AND SPACE SAVING  
 IN ONE TANK**

Underground tanks made from Fiber Reinforced Plastic (FRP) that can endure earth's pressure and make the tanks strong and more durable



- Virgin Plastic: For better strength, durability & flexibility
- Food Grade Plastic with FDA Approval: Ensures safety & hygiene of stored water
- Non-porous and does not allow water to get contaminated
- Impermeable to roots of trees
- Available for 10,000 to 50,000 litres storage capacity

**Product Features & Benefits**



**Underground/  
 Onground  
 installation**



**Reduces BOD  
 by 90-95%**



**Fully  
 Automated**



**Leak Proof,  
 Rust Free &  
 Non Corrosion**



**Lightweight**



**Easy  
 Installation**



**50 Years+  
 Lifespan**

**Easy steps to get FRP Underground Water Tanks for your premises**

- Express interest about FRP underground water tanks with your nearest retailer or reach out to us using the QR code
- Provide your storage tank requirements
- Fix site inspection with Sintex team by paying a token advance payment to Sintex BAPL
- Post site inspection, get a detailed storage tank recommendation customised for your premises.
- Final payment & tank installation



Site visit payment is collected in advance, billed separately by the Service team, and accepted via bank transfer to Sintex BAPL. This amount will be adjusted against the final payment.



## Powered by the Welspun legacy

Welspun has successfully forayed across businesses like home textiles, advanced textiles, flooring solutions, retail, infrastructure, warehousing, line pipes, DI pipes, stainless steel & alloy, pig iron, TMT rebars and more. Keeping customer-centricity at the core, we are present in 50+ countries with a team of 30,000+ committed employees.

Our comprehensive and ever-expanding global presence enables us to leverage our business associations with a marquee of esteemed clients, especially in sectors like retail and Oil & Gas. We are partners by choice in some of the most challenging projects for the largest players globally. Welspun is now the wind beneath our wings. It is a legacy that combines with our strengths to create an absolute world class organization, delivering a global product. Powered by Welspun, Sintex is today a pioneer and a torch bearer of health and hygiene. A name that an entire country trusts and looks up to. An icon that through its past commitment and future forward thinking straddles both India's nostalgia and India's rise into a new age.

Here's to delivering innovations that are SAAF, SAFE, SAHI - to India and the world, with SINTEX.

Global presence in  
50+ countries

Strong team  
30000+ employees

Group revenue  
US\$ 5 billion



## THANK YOU

# INDIA

- India's Leading Water Tank Brand for 50 years.
- A wide range of commercial tank storage capacity from 200 to 16 lakh litres
- Category creators & leaders through top class quality & innovation
- Sintex is now a part of Welspun World, a \$50 billion Indian conglomerate