

Live Better

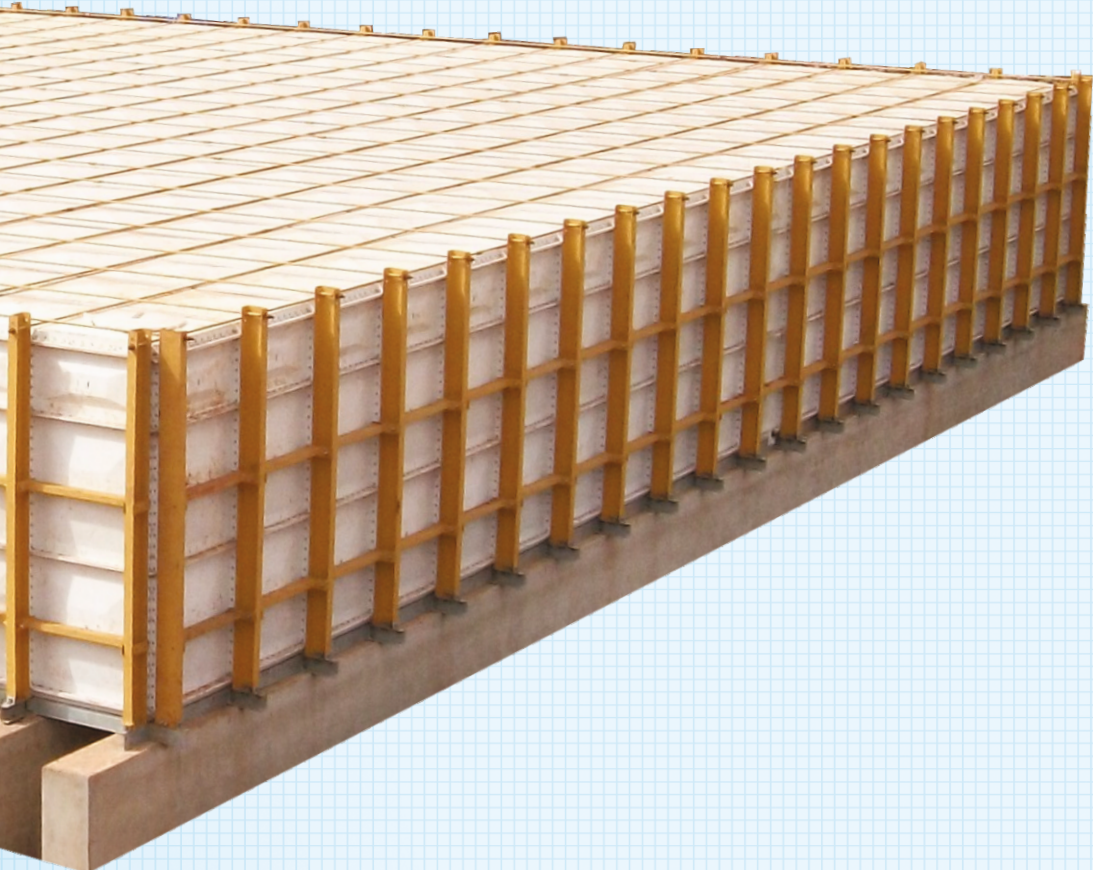
Sintex[®]

by Welspun[®]

**I WANT
SMC PANEL
TANKS
THAT ARE
EASY TO
ASSEMBLE.**



**I WANT
SMC PANEL
TANKS
THAT ARE
WEATHER
RESISTANT.**

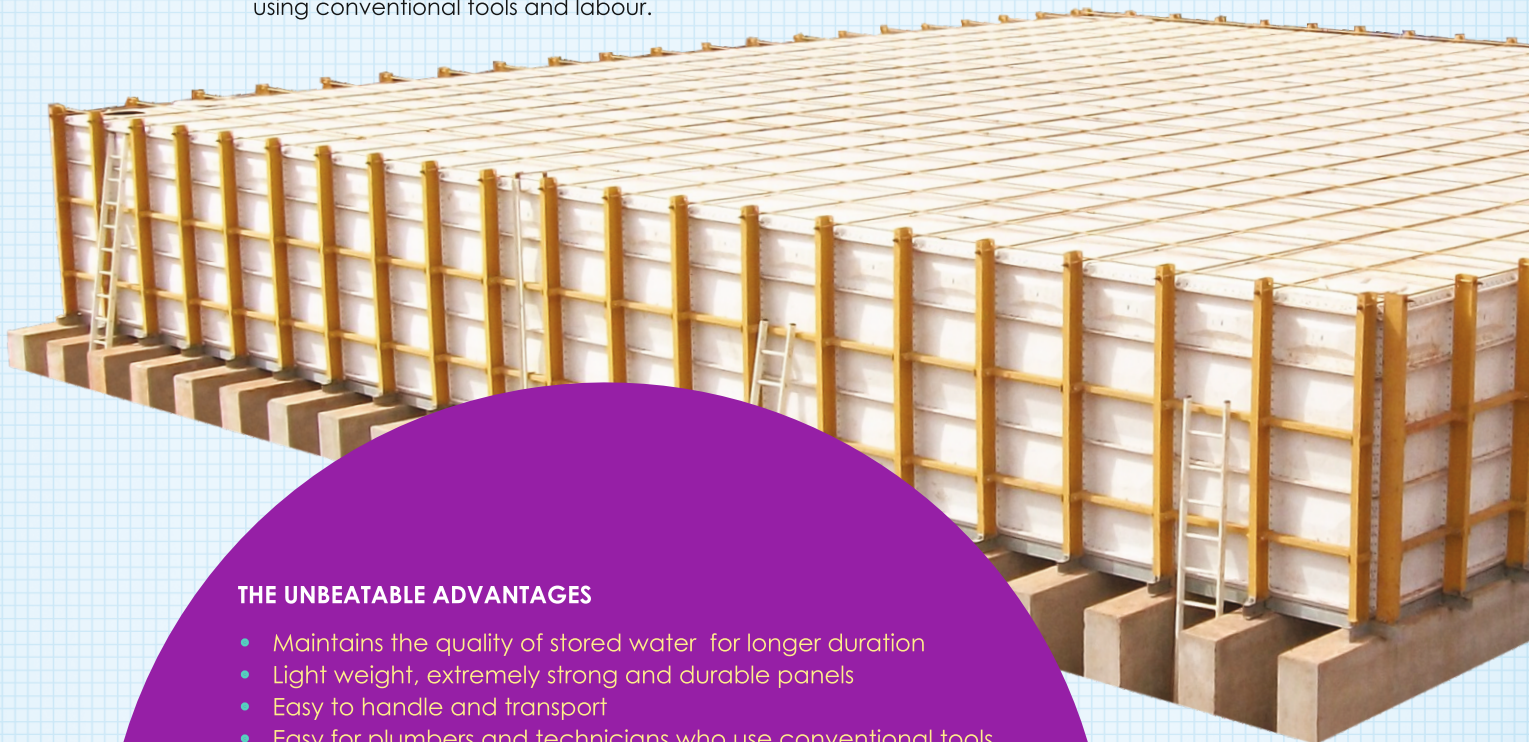


SMC PANEL TANKS

Constructing tanks with large storage capacities has always been a major task. It consumes a lot of time, money and effort to build and install such tanks and it gets tougher with the terrain. Installation in mountainous areas is a nightmare. This is where Sintex SMC panel tanks make a difference.

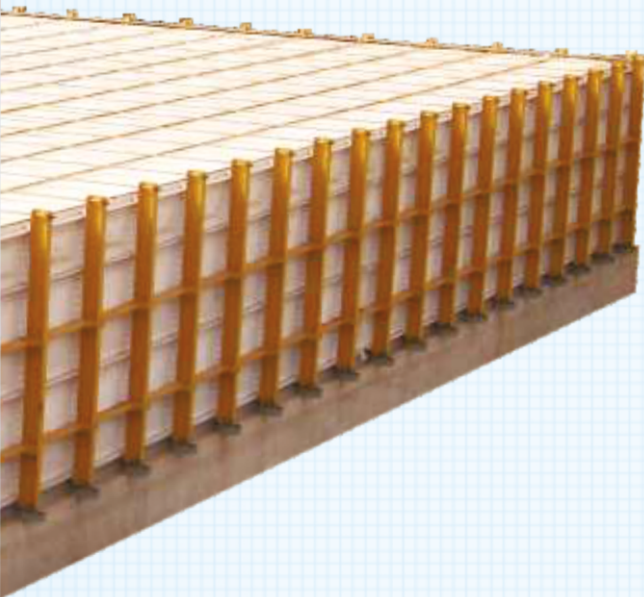
Sintex, the leader in plastic products and innovations brings you SMC panels that overcome all the problems associated with high capacity tanks. Available in cargo capacities ranging from 500 litres to 10,00,000 litres and more, these tanks have been in use all over the world, for the last three decades and they are preferred over RCC and MS tanks.

These tanks are absolutely maintenance-free and come with life expectancy of over 50 years. They are available in knocked-down-state, in the form of light-weight Sintex SMC panels of standard size of 1m x 1m, 1m x 0.5 m, 0.5 m x 0.5 m and 1m x 2 m, and hence can be carried even to the most difficult terrains by any locally available transport including bullock carts or mules. Panels are made from advanced composite plastic, comprising glass fibre reinforcement and formulation of selected resins. These have flanges on four sides and large size tanks are assembled by bolting the panels on flanges using special sealant and gaskets to form leak proof construction. The Sintex SMC panel tanks can be quickly and conveniently assembled and installed using conventional tools and labour.



THE UNBEATABLE ADVANTAGES

- Maintains the quality of stored water for longer duration
- Light weight, extremely strong and durable panels
- Easy to handle and transport
- Easy for plumbers and technicians who use conventional tools
- Easy to assemble at the site in any size.
- 100% weather resistant, water, moisture & rot-proof.
- 100% safe for drinking water storage as tanks are made from FDA approved grades of material
- Easy to dismantle and shift
- Easy to increase or decrease the size
- Ideal for storing water right from sub-zero to extremely hot climates
- Proven life of over 50 years even in the worst climates of the world
- Water storage & transportation in the dry lands
- Water and waste water storage in effluent treatment plants.
- Water storage in chemical, pharmaceutical and corrosive factory areas



APPROVALS & CERTIFICATES

Sintex SMC panel tanks have passed stringent tests and received approvals from renowned departments and institutes such as the Indian Railways, MES, Municipal Corporation of Greater Bombay, CPWD, and Defence etc.

Sintex SMC panel tanks have also proven their worth at international level Approval by PWD Department-Abu Dhabi and Ministry of Electricity & Water (UAE). The number of installations in Kuwait is a testimony to the quality of Sintex SMC panel tanks.

Sintex SMC panel tanks are successfully tested & certified for parameters like mechanical properties, overall migration, portability etc. by institutes like CIPET, Ahmedabad, and L.D College of Engineering-Ahmedabad. P.D.T.C. etc.

APPLICATIONS

Sintex SMC Panel tanks have multiple applications but are specially suited to following situations.

- Storage of treated water. DM-water and Process-water in industry and utility organizations
- Rural, Semi urban & urban water supply schemes
- Water supply schemes for housing colonies
- Water storage for firefighting operations
- Water storage in coastal, hilly, extremely hot & cold and difficult terrains
- Overhead water storage in multistoried buildings
- On-site water storage in construction projects

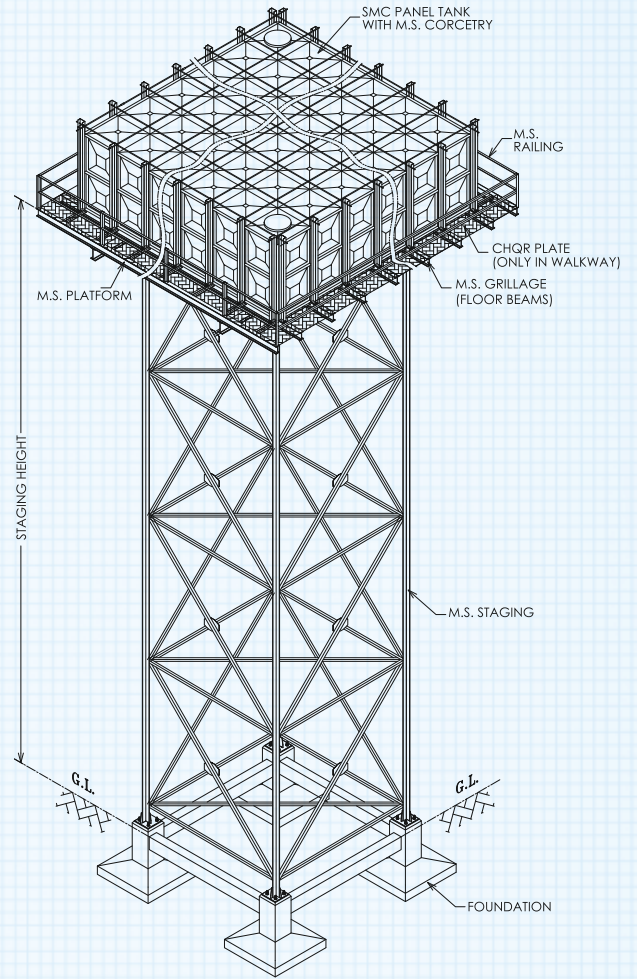


PARTS AND COMPONENTS

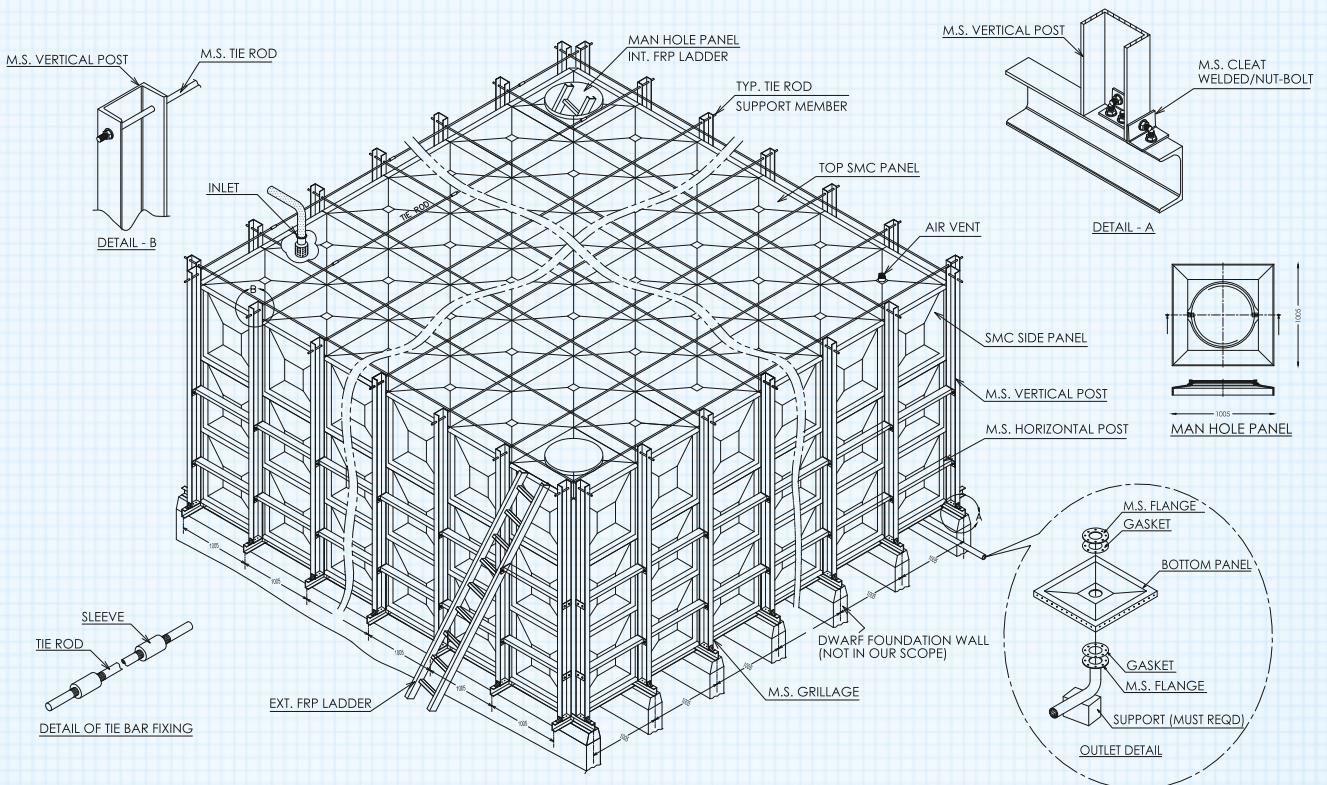
In general a Sintex SMC Panel tank shall consist of the following parts.

NAME OF THE PARTS	SPECIFICATION/MATERIAL OF CONSTRUCTION
Standard SMC Panels of sizes 1 m × 1 m or 1 m × 0.5 m x 0.5 m, 1 m x 2 m, for bottom, sides and top construction.	Hot press moulded UV stabilised panels made from sheet moulding compounds (SMC) comprising of glass fibre and formulation of selected resins
Corner angles	Same as panels
Manhole cover	Hot press mould made from SMC with double lip construction, mosquito-proof design and hinged type
Sealant	Non-reactive sealant with high level of resistance to ageing and superior recovery from compression
Bolts, nuts and washers (hot dip galvanised and S.S. Hardware options)	Galvanised steel S.S. hardware available
External reinforcement (wherever applicable)	Steel with anticorrosive paint
Internal roof supports	Plastic
External ladder (optional)	GRP/Ladders made out of pultruded sections
Internal ladder (wherever applicable)	GRP/Ladders made out of pultruded sections
Connections for inlet/outlet/overflow/drain	G.I. flanged type (optional)
Air-vent	Plastic
Water level indicator without glass	FRP

General arrangement drawing for over head



General arrangement drawing for ground level - SMC Panel tank 3m height



RANGE

Below are the standard measurements of Sintex SMC Panel tanks. The dimensions of special capacity tanks can also be furnished on request.

RANGE & SPECIFICATIONS				
Code No.	Nominal Capacity (KL)	Length (mt.)	Breadth (mt.)	Depth (mt.)
GS-PT-008-S2	8	2	2	2
GS-PT-010-S2.5	10	2	2	2.5
GS-PT-018-S2	18	3	3	2
GS-PT-022-S2.5	22.5	3	3	2.5
GS-PT-027-S3	27	3	3	3
GS-PT-032-S2	32	4	4	2
GS-PT-040-S2.5	40	4	4	2.5
GS-PT-048-S3	48	4	4	3
GS-PT-050-S2	50	5	5	2
GS-PT-062-S2.5	62.5	5	5	2.5
GS-PT-072-S2.5	72	6	6	2
GS-PT-075-S3	75	5	5	3
GS-PT-090-S2.5	90	6	6	2.5
GS-PT-098-S2	98	7	7	2
GS-PT-108-S3	108	6	6	3
GS-PT-122-S2.5	122.5	7	7	2.5
GS-PT-128-S2	128	8	8	2
GS-PT-147-S3	147	7	7	3
GS-PT-160-S2.5	160	8	8	2.5
GS-PT-162-S2	162	9	9	2
GS-PT-192-S3	192	8	8	3
GS-PT-200-S2	200	10	10	2
GS-PT-202-S2.5	202.5	9	9	2.5
GS-PT-242-S2	242	11	11	2
GS-PT-243-S3	243	9	9	3
GS-PT-250-S2.5	250	10	10	2.5
GS-PT-288-S2	288	12	12	2
GS-PT-300-S2	300	10	10	3
GS-PT-302-S2.5	302.5	11	11	2.5
GS-PT-338-S2	338	13	13	2
GS-PT-360-S2.5	360	12	12	2.5
GS-PT-363-S3	363	11	11	3
GS-PT-422-S2.5	422	13	13	2.5
GS-PT-432-S3	432	12	12	3
GS-PT-450-S2	450	15	15	2
GS-PT-490-S2.5	490	14	14	2.5
GS-PT-507-S3	507	13	13	3
GS-PT-512-S2	512	16	16	2
GS-PT-562-S2.5	562.5	15	15	2.5
GS-PT-588-S3	588	14	14	3
GS-PT-640-S2.5	640	16	16	2.5
GS-PT-675-S3	675	15	15	3
GS-PT-768-S3	768	16	16	3
GS-PT-867-S3	867	17	17	3
GS-PT-972-S3	972	18	18	3
GS-PT-1083-S3	1083	19	19	3
GS-PT-1200-S3	1200	20	20	3

Series GS-PT SMC Panel Tanks

INSTALLATION

Sintex panel tanks are delivered in ready-to-assemble condition in the form of panels, stays, supporting frames along with nuts, bolts and other accessories. Based on the plan drawing for each and every proposed tank, the erection and installation can be carried out at the site by plumbers and sanitation engineers. Also, we offer turnkey facility for each erection and installation of these tanks anywhere in the country.

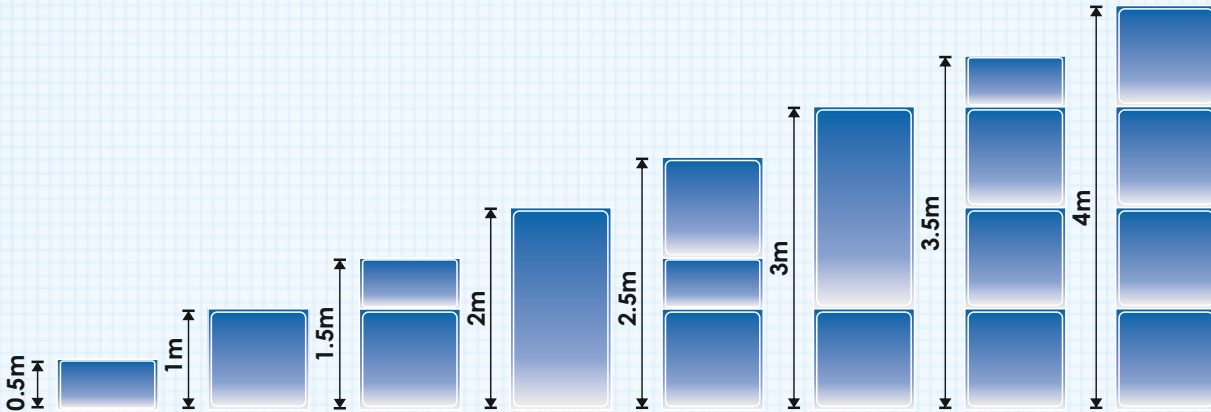
- Delivered in ready-to-assemble condition in the form of panels, stays, supporting frames along with nuts, bolts etc.
- Erection and installation can be carried out at the site by plumbers and sanitation engineers
- We offer turnkey facility for each erection and installation of these tanks, anywhere in the country.
- Designs and drawings ready for stagings up to 10 metres height, of different capacities which can be furnished against order placement.



Comparison of thermal properties of Sintex SMC Panel tanks Vs. steel tanks

TYPE	THERMAL CONDUCTIVITY (KCAL/M-HR-C)	COEFFICIENT OF OVERALL THERMAL TRANSMISSION (KCAL/M3-HR-C)	
		Air Panel	Water Panel
Steel	37.00	14.3	24.0
Sintex (Standard) SMC Panel Tanks	0.15	3.0	5.0

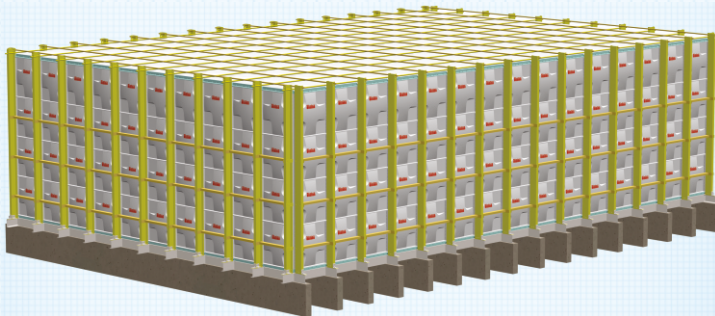
SMC Panel Tank Height Range



4 Meter Height Tank Range & Dimensions

RANGE

Below are the standard measurements of Sintex SMC Panel tanks. The dimensions of special capacity tanks can also be furnished on request.



4 Meter Height Tank Range & Dimensions			
Product Capacity(KL)	Length (Mtr)	Breadth (Mtr)	Depth (Mtr.)
100	5	5	4
120	6	5	4
144	6	6	4
196	7	7	4
224	8	7	4
256	8	8	4
324	9	9	4
360	10	9	4
400	10	10	4
440	11	10	4
484	11	11	4
576	12	12	4
600	15	10	4

For any query please contact

+91 97129 90126

+91 90999 39390

+91 90990 72434

Sintex[®]

by Welspun[®]

SINTEX-BAPL LIMITED

Seven Garnala, Kalol, North Gujarat - 382721, India.

Ph.: 02764-253500 | Toll Free No.: 1800-121-2764

www.sintexonline.com Email: sintex_support@welspun.com